



Exterior Paint Colors

THERE'S A LOT OF PROTECTION UNDER THAT BEAUTIFUL FINISH.

From the first step, Audi bodies are made to last.

Parts most subject to corrosion are made of a special galvanized steel, known for its ability to resist rust. Then the entire body goes through a degreasing bath, and a rinse. Next it is dipped into a zinc phosphate solution, for more rust protection.

Then Audi primer is applied by cathoporesis, meaning that the negatively charged body is submerged into a tank of positively charged paint. Cathodes placed into hollow spaces assure uniform coverage to every nook and cranny. The result is a thick and incredibly even coat that is automatically bonded to all surfaces. This coat is baked hard in a 375°F drying chamber.

The Audi continues getting tougher. A polymer undercoating is sprayed evenly onto the body, and polymer beading seals every major body seam. Next comes wet-sanding, inspection, filler and more sanding. The body is cleaned, and hand-dried with a special chamois. Only then does it receive the final enamel coat.

After the final drying at 285°F, the body is checked again by inspectors wearing special gloves which detect even a minor snag. But before the interior panels are attached, the doors, hood, trunk lid, and inside of the pillars and posts are flooded with a special wax to protect against moisture, and remains pliable, neither hardening nor cracking after many years.

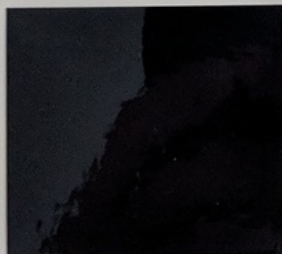
In total, your Audi wears more than 20 pounds of protection, giving it a beauty that is much more than skin deep.

Specifications, standard equipment and options subject to change without notice.

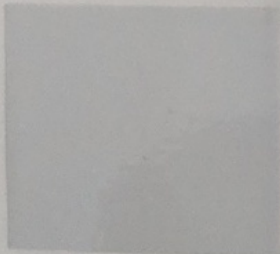
STANDARD COLORS



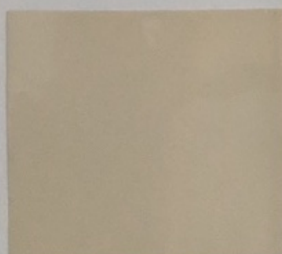
TORNADO RED
Code G2G2



COPENHAGEN BLUE
Code K3K3



ALPINE WHITE
Code P1P1



LIGHT IVORY
Code P9P9

CLEARCOAT METALLIC COLORS

(Extra cost except for 5000CS Turbo, 5000CS Turbo quattro, and 5000CS Turbo quattro Wagon. *Availability of Pearl White Metallic at additional cost and restricted to 5000CS Turbo and 5000CS Turbo quattro in limited quantity.)



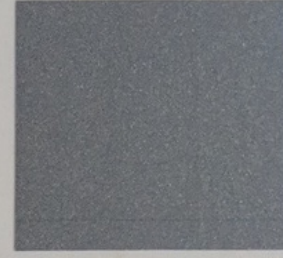
PEARL WHITE METALLIC*
Code C9C9



SAPPHIRE METALLIC
Code L5L5



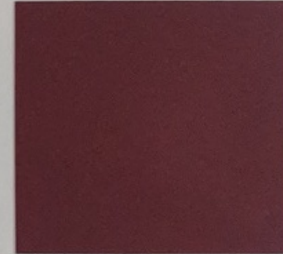
ZERMATT SILVER METALLIC
Code L1L1



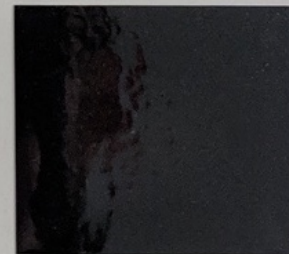
STONE GREY METALLIC
Code U8U8



AMAZON BLUE METALLIC
Code L6L6



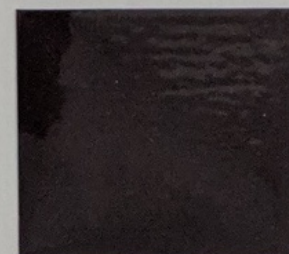
TITIAN RED METALLIC
Code W4W4



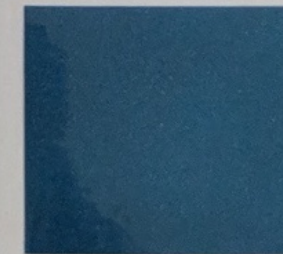
GRAPHITE METALLIC
Code W9W9



CALAHARI BEIGE METALLIC
Code Y4Y4



MAHOGANY BROWN METALLIC
Code Z6Z6



OCEANIC BLUE METALLIC
Code L7L7