

There's a lot of protection under that beautiful finish.

Right from the first step, Audi bodies are made to last.

Some body parts most subject to corrosion are made of a special galvanized steel, known for its ability to resist rust. Then the entire body goes through a degreasing bath, and a rinse. Next it is dipped into a zinc phosphate solution, for more rust protection, and to better prepare the body for a primer coat.

That critical primer is applied by cathoporesis, meaning that the negatively charged body is submerged into a tank of positively charged paint. Cathodes placed into hollow spaces assure uniform coverage to every nook and cranny. The result is a thick and incredibly even coat that is automatically bonded to all surfaces. This coat is baked hard in a 375°F drying chamber.

The Audi continues getting tougher. A polymer undercoating is sprayed evenly onto the body, and polymer beading seals every major body seam. Next comes wet-sanding, inspection, filler, and more sanding as needed. By hand. The body is cleaned, and hand-dried with a special chamois. Only then does it receive the final enamel coat which makes Audis beautiful.

After the final drying at 285°F, the body is checked again by eye and by hand, by inspectors wearing special gloves which detect even a minor snag. But there's still more protection to come. Before the interior panels are attached, the doors, hood, trunk lid, and inside of the pillars and posts are flooded with a special wax to protect against moisture which could accumulate after a rainstorm or carwash. The wax remains pliable, neither hardening nor cracking after many years.

In total, your new Audi wears more than 20 pounds of protection, giving it a beauty that is much more than skin deep.

Specifications, standard equipment and options subject to change without notice.



The art of engineering

**Audi
1985**

**Exterior
Paint
Colors**

Audi 4000S

4000S Quattro

Coupe GT

Quattro

5000S Sedan

5000S Wagon

5000S Turbo



STANDARD COLORS



TORNADO RED
Code G2G2



COPENHAGEN BLUE
Code K3K3

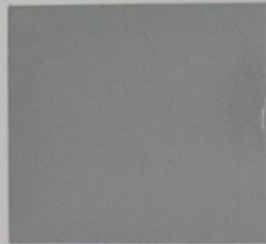


ALPINE WHITE
Code P1P1

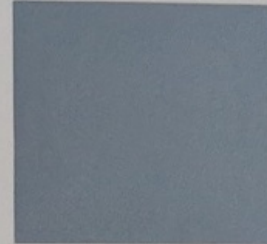


LIGHT IVORY
Code P9P9

METALLIC COLORS (Optional at extra cost except for 5000S Turbo and Quattro Coupe)



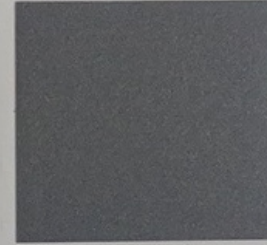
ZERMATT SILVER METALLIC
Code L1L1



SAPPHIRE METALLIC
Code L5L5



AMAZON BLUE METALLIC
Code L6L6



STONE GREY METALLIC
Code U8U8



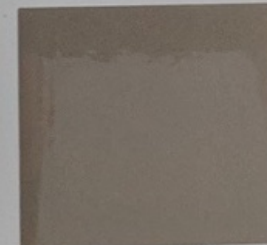
LHASA GREEN METALLIC
Code W1W1



TITIAN RED METALLIC
Code W4W4



GRAPHITE METALLIC
Code W9W9



CALAHARI BEIGE METALLIC
Code Y4Y4



MAHOGANY BROWN
METALLIC
Code Z6Z6

1985 AUDI COLOR SELECTIONS

COLORS	MODELS					
	4000S	4000S QUATTRO	COUPE GT	QUATTRO	5000S	5000S TURBO
TORNADO RED Code G2G2		X	X	X		
COPENHAGEN BLUE Code K3K3	X					
ALPINE WHITE Code P1P1	X	X	X	X	X	
LIGHT IVORY Code P9P9	X				X	
ZERMATT SILVER METALLIC Code L1L1	X	X	X	X	X	X
SAPPHIRE METALLIC Code L5L5	X		X	X	X	X
AMAZON BLUE METALLIC Code L6L6				X	X	X
STONE GREY METALLIC Code U8U8	X			X	X	X
LHASA GREEN METALLIC Code W1W1				X		
TITIAN RED METALLIC Code W4W4	X			X	X	X
GRAPHITE METALLIC Code W9W9	X	X	X	X	X	X
CALAHARI BEIGE METALLIC Code Y4Y4	X				X	X
MAHOGANY BROWN MET. Code Z6Z6	X				X	X